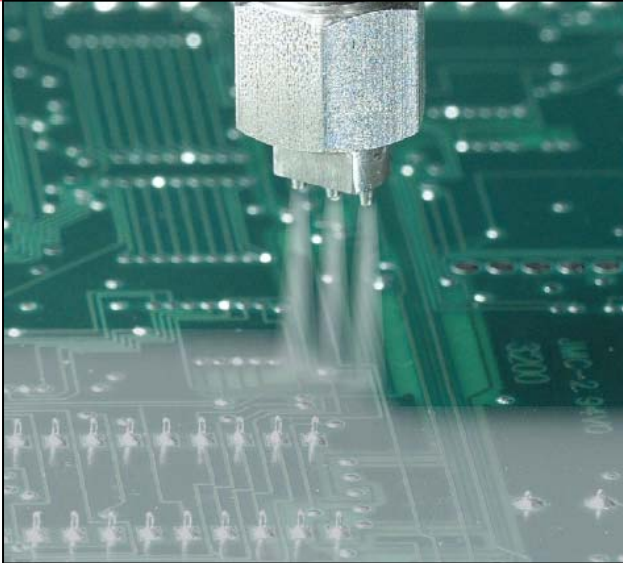




**WHERE
PRECISION
DRIVES
PRODUCTION**



FC100-C NON-ATOMIZED FLOW COATING VALVE

The FC100-C flow coating valve produces a sharp, non-atomized stream of low viscosity fluids and coatings. The precise application process is ideal for solvent-based chemistries requiring wet film builds of at least 0.010".

The FC100-C has many integrated features including:

- ▲ Non-atomized coating process with superior edge definition
- ▲ Rapid coating speed up to 457 mm (18 in) / second
- ▲ Divorced valve design prevents material contamination of the air section
- ▲ Stainless steel fluid body for superior material compatibility
- ▲ Multi-port application head with interchangeable 19g to 27g tips
- ▲ Adjustable flow control

The FC100-C is available on all new PVA2000™, PVA650™, and PVA350™ selective coating systems, or can be retrofitted to any existing PVA platform. For more information on PVA's coating capabilities, please contact one of our sales representatives at (518) 371-2684.

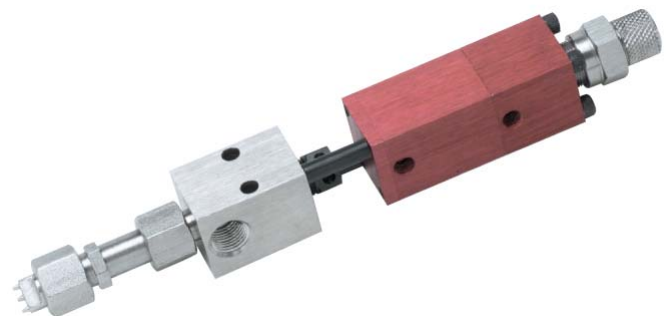
PVA also offers the following products to improve your dispensing application:

FC1-C-SP
FC100-C spare parts kit

FCS300-ES
Stainless steel extended spray valve

FCM100
Non-contact micro dispensing valve

FC100-MC
Stainless steel front closing dispensing valve



VALVE SPECIFICATIONS

Dimensions:
173 mm x 19 mm
(6.82 in x 0.75 in)

Weight:
6 oz

Viscosity Range:
1 cps – 1000 cps

Operating Air Pressure:
60 – 100 psi

Maximum Inlet Fluid Pressure:
3500 psi

Wetted Components:
Stainless steel, Teflon®, Kalrez®

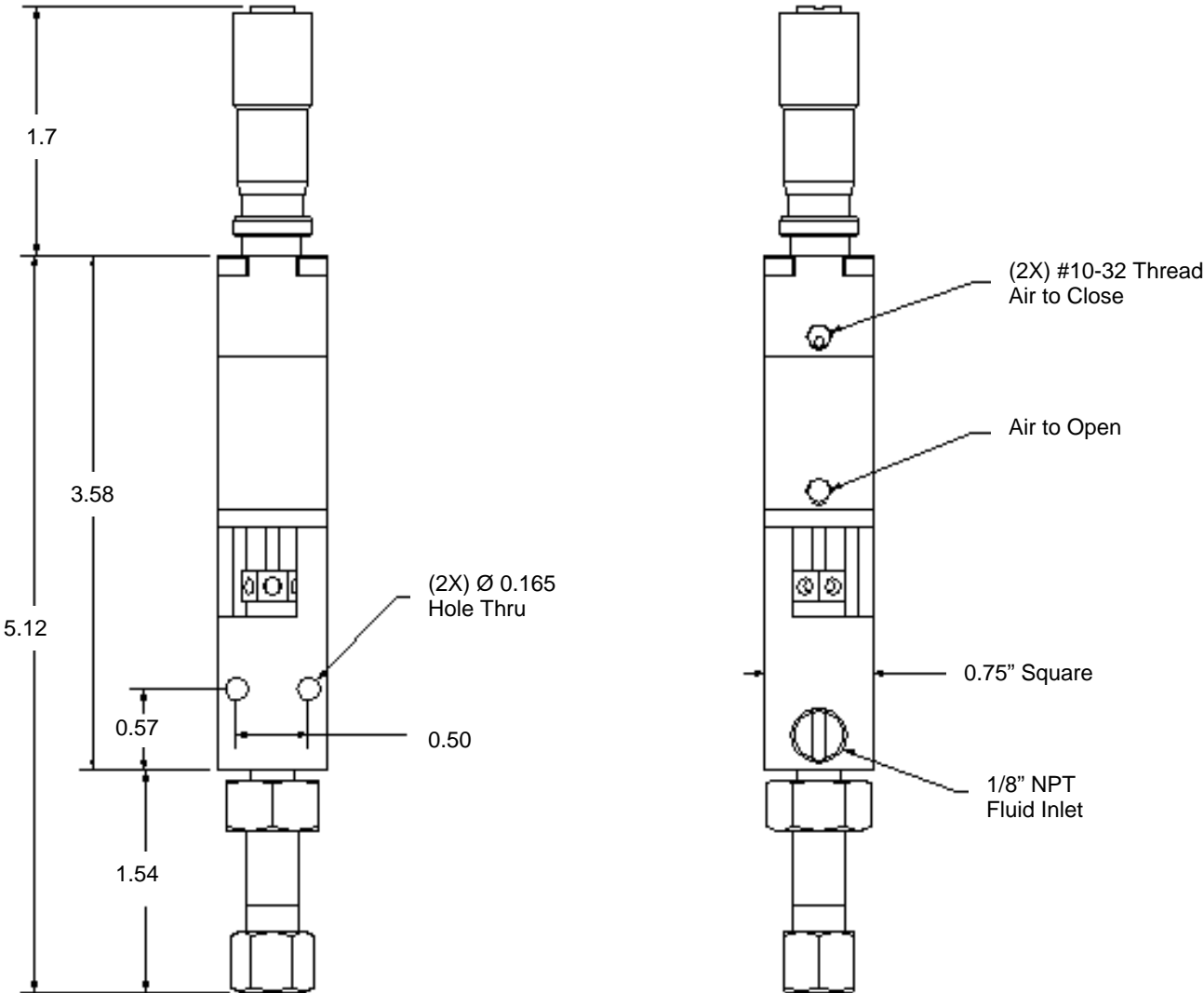
Transfer Efficiency:
99%

Coating Speed:
Up to 457 mm (18 in) / sec

15 Solar Drive
Halfmoon NY 12065
tel 518 371 2684
fx 518 371 2688
www.pva.net

Teflon® and Kalrez® are registered trademarks of Dupont.

FC100-C Mounting Dimensions



All dimensions provided in inches