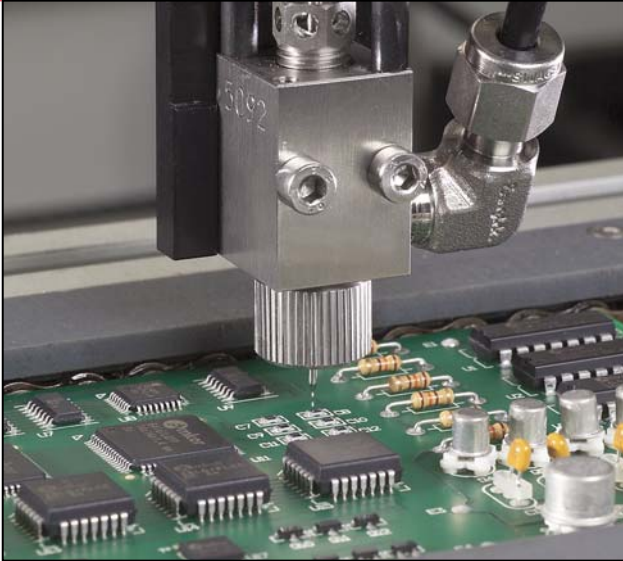




**WHERE
PRECISION
DRIVES
PRODUCTION**



VALVE SPECIFICATIONS

Dimensions:

152 mm x 19 mm x 19 mm
(6.00 in x 0.75 in x 0.75)

Minimum Shot Size:

0.83 μ l

Minimum Line Width:

0.25 mm (0.010 in)

Minimum Orifice Inside Diameter:

0.1mm (0.004")

Viscosity Range:

1 cps – 20,000 cps

Operating Air Pressure:

60 – 100 psi

Maximum Inlet Fluid Pressure:

3500 psi

Wetted Components:

Stainless steel, Teflon[®], Kalrez[®]

FCM100 NON-CONTACT MICRO DISPENSING VALVE

The FCM100 is ideal for any low viscosity underfill, encapsulant, conformal coating, and micro dot or bead dispensing project. The FCM100 "propels" precise shots of fluid onto a substrate resulting in accurate patterns at a high robot speed as no in process z-axis adjustments are required. The FCM100 is compatible with all PVA automated platforms.

The FCM100 has many integrated features including:

- ▲ Interchangeable 22, 25, 27, 28, 30, and 32 gauge tip designs for various dispensing profiles
- ▲ Micrometer flow adjustment with lock nut
- ▲ inMOTION™ dispensing with no z-axis motion needed
- ▲ Highly repeatable dot size results in superior pattern definition
- ▲ Dot and continuous line dispensing profile capability
- ▲ Divorced valve design prevents material contamination of the air body

For more information on PVA's dispensing and coating capabilities, please contact one of our sales representatives at (518) 371-2684.

The FCM100 micro dispensing valve is available in the following configurations:

FCM100-22G

Non-contact micro dispensing valve with 22g tip

FCM100-25G

Non-contact micro dispensing valve with 25g tip

FCM100-27G

Non-contact micro dispensing valve with 27g tip

FCM100-28G

Non-contact micro dispensing valve with 28g tip

FCM100-30G

Non-contact micro dispensing valve with 30g tip

FCM100-32G

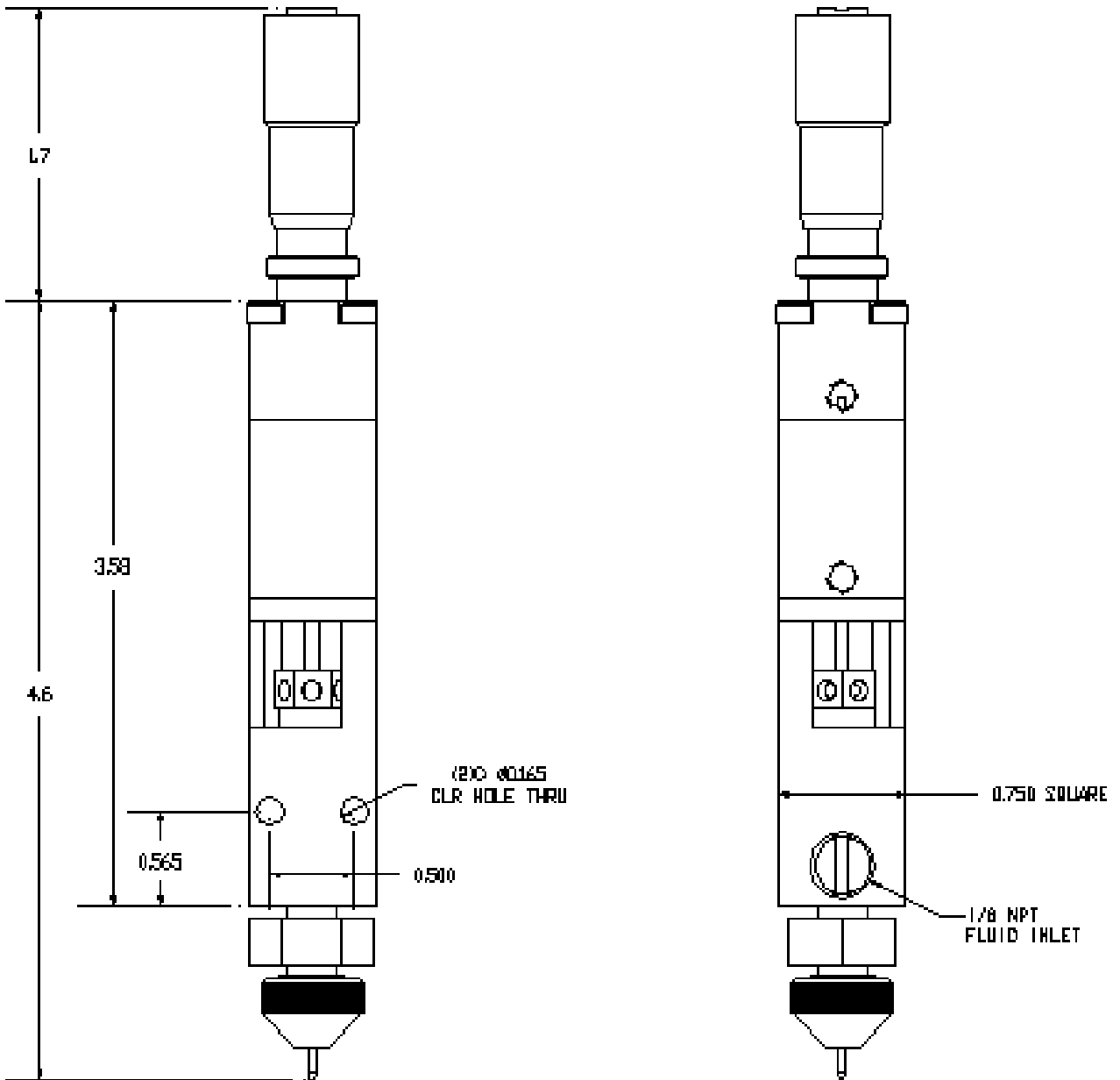
Non-contact micro dispensing valve with 32g tip



15 Solar Drive
Halfmoon NY 12065
tel 518 371 2684
fx 518 371 2688
www.pva.net

Teflon[®] and Kalrez[®] are registered trademarks of Dupont.

FCM100 Mounting Dimensions



All dimensions provided in inches