



**WHERE
PRECISION
DRIVES
PRODUCTION**



VALVE SPECIFICATIONS

Dimensions:

147 mm x 22 mm x 22 mm
(5.80 in x 0.866 in x 0.866 in)

Weight:

9 oz

Viscosity Range:

1 cps – Paste

Operating Air Pressure:

60 – 100 psi

Maximum Inlet Fluid Pressure:

2500 psi

Wetted Components:

Stainless steel, Teflon[®], Kalrez[®]

Transfer Efficiency:

99%

Spray Pattern Width (Round Cap):

0.25 in – 1 in

Spray Pattern Width (Flat Cap):

0.75 in – 2 in+

FCS100 STAINLESS STEEL SPRAY VALVE

The FCS100 spray valve provides a repeatable, concentrated coating film in pattern widths ranging from 0.25" to over 2". The atomized spray process resulting from the FCS100 will produce conical (round cap) or fan-shaped (flat cap) patterns with transfer efficiencies in excess of 99%.

The FCS100 has many integrated features including:

- ▲ Low pressure, low volume atomized process
- ▲ 300 series stainless steel fluid body for superior material compatibility
- ▲ Interchangeable spray cap offers fan and oval-shaped patterns
- ▲ Flow adjustment with lock nut
- ▲ Divorced valve design prevents contamination of the air section
- ▲ Compatible with all commercially available conformal coatings
- ▲ Wide viscosity range offers versatility for virtually any spray application

The FCS100 is available on all new PVA2000™, PVA650™, and PVA350™ selective coating systems, can be retrofitted to any existing PVA system, or can be acquired for any manual spray application. For more information, please contact a PVA sales representative at (518) 371-2684.

PVA also offers the following products to improve your dispensing application:

FCS300

Stainless steel spray valve with micrometer flow adjustment

FCS300-ES

Stainless steel extended spray valve

FC100-MC

Stainless steel front closing dispensing valve

FCS1-SP

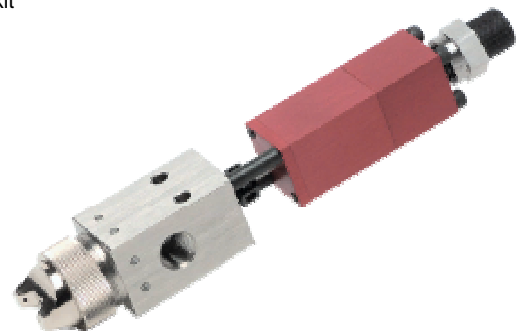
FCS100 spare parts kit

V317

Flat spray cap

V318

Round spray cap



15 Solar Drive
Halfmoon NY 12065
tel 518 371 2684
fx 518 371 2688
www.pva.net

Teflon[®] and Kalrez[®] are registered trademarks of Dupont.

FCS100 Mounting Dimensions

