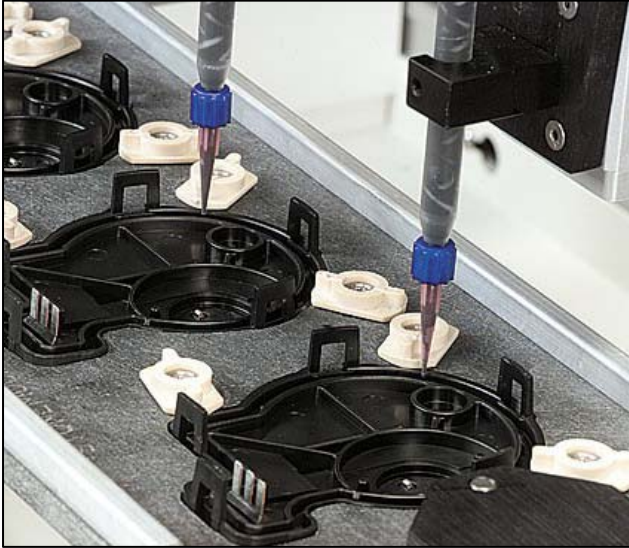




**WHERE
PRECISION
DRIVES
PRODUCTION**



MX3000 / MX4000 GEAR PUMP METER-MIX DISPENSING SYSTEMS

GEAR PUMP SPECIFICATIONS

Mix Ratio:

Fixed or variable 1:1 to 20:1

Viscosity Range:

10 to 3 million cps

Maximum Shot Size:

Infinite

Flow Rate:

MX3000 – 0.5 to 450 cc/min

MX4000 – 1 to 3000 cc/min

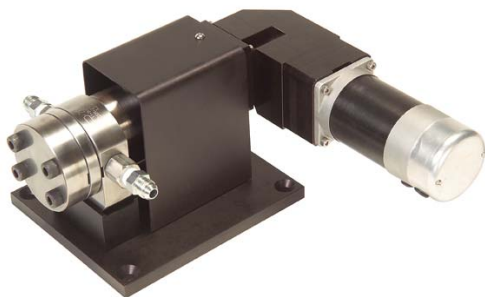
PVA's MX3000 and MX4000 series gear pump systems are an ideal choice for most non-abrasive meter-mix dispensing applications. Gear pump designs feature continuous material flow with no recharging necessary. PVA pumps are designed specifically for processing a wide range of adhesives and sealants.

Closed loop servo drives enable the operator to program the mix ratio, shot size, flow rate, pressure control, vacuum degas, recirculation, and auto purge functions via a menu-driven HMI.

PVA's gear pump metering systems have many additional integrated features including:

- ▲ Continuous pulse-free flow
- ▲ High pressure capability up to 4000 psi
- ▲ Wide viscosity range to 3 million cps
- ▲ Superior resolution as pumps are sized to each application

For more information on PVA's automated dispensing capabilities, please contact one of our sales representatives at (518) 371-2684.



15 Solar Drive
Halfmoon NY 12065
tel 518 371 2684
fx 518 371 2688
www.pva.net

METER-MIX DISPENSING SYSTEMS

PVA manufactures single and plural component metering systems customized to each specific requirement. Standalone metering systems not integrated onto a PVA robotic platform come with a standalone controller allowing multiple dispensing profiles to be stored. Within each profile, automatic purge modes and variable flow rates are available. PVA metering systems feature closed-loop servo drives for added repeatability and dispense volume accuracy. All standalone meter-mix systems include an enclosure and are mounted in a frame or custom cart with casters.

Material Delivery Systems:

One liter to 30 gallon pressure vessel options
Cartridge retainers and pumps
Five gallon pail and 55 gallon drum pumps
Automatic material crossover options
High pressure material regulators and filters

Optional Process Control Features:

Low level material sensors
Material agitators
Material agitators
Vacuum degassing
Heated material tank, hose assemblies
Material tank and valve heating
Recirculation systems
Material flow monitoring with data collection

DISPENSE VALVES	Model	Type	Ratio	Flow Rate	Viscosity	Application
	PC100	Front Closing	1:1 or Wide	Low	Low to Med	Small Shots Wide A/B Viscosity Delta
	PC200	Snuff Back	1:1 or Wide	High	Med to High	Abrasive Materials
	PC200R	Snuff Back	1:1 or Wide	Med	Low to Med	Reduced Snuff Back Abrasive Materials
	PC200RW	Snuff Back	Wide	Low	Low to Med	Small Shots Abrasive Materials Wide A/B Viscosity Delta
	PCD200	Dynamic	1:1 or Wide	Med	Low to Med	Difficult to Mix Materials
	PC300	Front Closing	1:1 or Wide	Med	Med to High	Wide A/B Viscosity Delta
	PC400	Snuff Back	1:1 or Wide	High	Low to High	Ultra High Flow Rate

MMX SYSTEMS	Model	Flow Rate (cc/min)	Viscosity (cps)	Mix Ratio (1:1 to 20:1)	Maximum Pressure
	MX3000	0.5 to 450	10 to 1 million	Fixed* or single component	1000
	MX3000-VR	0.5 to 450	10 to 1 million	Variable	1000
	MX4000	1 to 3000	10 to 3 million	Single component	4000
	MX4000-VR	1 to 3000	10 to 3 million	Variable	4000

*1:1, 2:1 and 3:1, 4:1, 6:1, 10:1, and 20:1 ratio available as standard. For other ratios use MX3000-VR
All metering systems are servo driven. "VR" models have dual independent servo drives.

TYPICAL APPLICATIONS

Potting and encapsulation
Conformal coating
Form in place gasketing
Laminating
Sealing
Adhesive / assembly operations
Coating

KEY MARKETS

Automotive
Electronics
Solar and wind energy
Aerospace
Consumer goods
Medical



MX3000-VR shown with optional tool balance arm