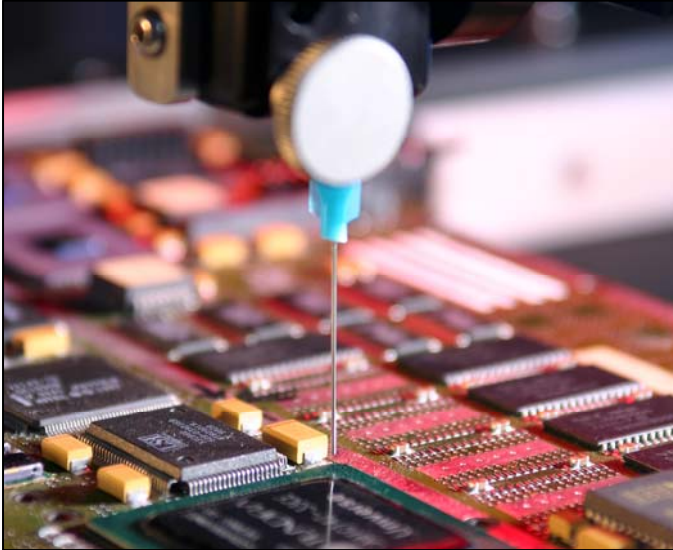




**WHERE  
PRECISION  
DRIVES  
PRODUCTION**



**DISPOSABLE DISPENSE NEEDLES  
PLASTIC HUB WITH STAINLESS STEEL CANULA**

PVA disposable needles feature a threaded polypropylene hub and stainless steel tubing cut burr free for a reliable dispense deposit.

**DISPOSABLE NEEDLE COLOR CHART**

COLOR	GAUGE	CORRESPONDING SIZE			
		INNER DIAMETER		OUTER DIAMETER	
		IN	MM	IN	MM
● Olive	14	0.069	1.77	0.083	2.11
● Orange	15	0.059	1.51	0.072	1.83
● Purple	16	0.053	1.35	0.065	1.65
● Pink	18	0.038	0.99	0.049	1.27
● Brown	19	0.033	0.79	0.043	1.06
● Yellow	20	0.025	0.64	0.036	0.91
● Green	21	0.022	0.56	0.033	0.82
● Black	22	0.020	0.46	0.028	0.72
● Sky Blue	23	0.016	0.41	0.025	0.64
● Dark Blue	25	0.012	0.30	0.020	0.51
● Grey	27	0.009	0.22	0.016	0.41
● Lavender	30	0.006	0.15	0.012	0.31



**50 PIECE BOX**

GAUGE	CANULA LENGTH / PART NUMBER		
	½" LENGTH	1" LENGTH	1½" LENGTH
14	PV-14-0.5X	PV-14-1X	PV-14-1.5X
15	PV-15-0.5X	PV-15-1X	PV-15-1.5X
16	PV-16-0.5X	PV-16-1X	PV-16-1.5X
18	PV-18-0.5X	PV-18-1X	PV-18-1.5X
19	PV-19-0.5X	PV-19-1X	PV-19-1.5X
20	PV-20-0.5X	PV-20-1X	PV-20-1.5X
21	PV-21-0.5X	PV-21-1X	-----
22	PV-22-0.5X	PV-22-1X	PV-22-1.5X
23	PV-23-0.5X	PV-23-1X	PV-23-1.5X
25	PV-25-0.5X	PV-25-1X	-----
27	PV-27-0.5X	PV-27-1X	-----
30	PV-30-0.5X	-----	-----

**1000 PIECE BAG**

GAUGE	CANULA LENGTH / PART NUMBER		
	½" LENGTH	1" LENGTH	1½" LENGTH
14	PV-14-0.5	PV-14-1	PV-14-1.5
15	PV-15-0.5	PV-15-1	PV-15-1.5
16	PV-16-0.5	PV-16-1	PV-16-1.5
18	PV-18-0.5	PV-18-1	PV-18-1.5
19	PV-19-0.5	PV-19-1	PV-19-1.5
20	PV-20-0.5	PV-20-1	PV-20-1.5
21	PV-21-0.5	PV-21-1	-----
22	PV-22-0.5	PV-22-1	PV-22-1.5
23	PV-23-0.5	PV-23-1	PV-23-1.5
25	PV-25-0.5	PV-25-1	-----
27	PV-27-0.5	PV-27-1	-----
30	PV-30-0.5	-----	-----

15 Solar Drive  
Halfmoon NY 12065  
tel 518 371 2684  
fx 518 371 2688  
www.pva.net