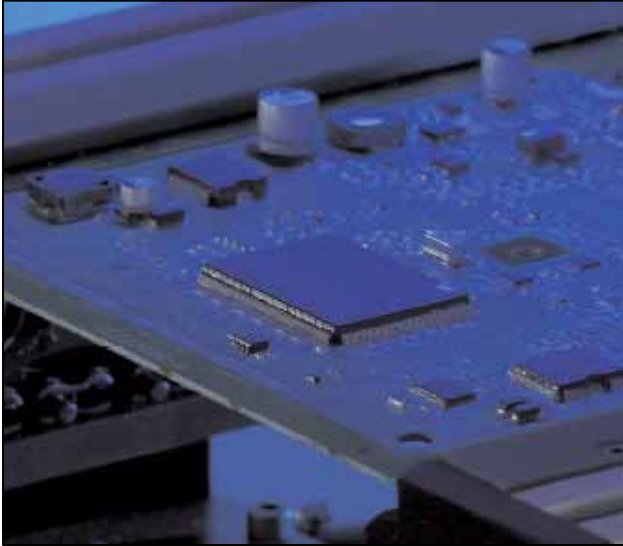




**WHERE
PRECISION
DRIVES
PRODUCTION**



SYSTEM SPECIFICATIONS

Power Requirements:
220VAC, +/-10%, 50/60 Hz
(Alternate options available by request)

UV Cure Lamps:
400W metal halide bulb

UV Cure Width:
5", 10", 15" or 20" standard

Conveyor Speed:
0.3 m/min to 5.8 m/min
(1 ft/min to 19 ft/min)

Board / Pallet Width:
51 mm to 508 mm
(2 in to 20 in)

Component Clearance:
76.2 mm (3 in)

Conveyor Height:
940 mm to 965 mm from floor
(37 in to 38 in, SMEMA standard)

Exhaust:
6" flange provided

Certification:
CE

UV5000 UV FLOOD LAMP CURING SYSTEM

The UV5000 is a compact UV curing module suitable for high intensity, rapid curing of UV coatings, adhesives, and inks. Each lamp features UV light in a concentrated 12.7 cm x 12.7 cm (5" x 5") area primarily in the UV-A range (320-390 nm wavelength). Lamps are easily combined to offer curing widths out to 508 mm (20 in).

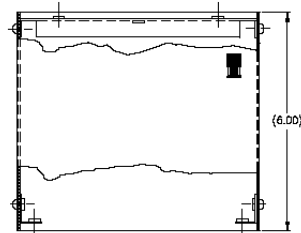
The UV5000 has many integrated features including:

- ▲ Edge carrying, variable speed pin chain conveyor
- ▲ Rail expansion compensation
- ▲ SMEMA communication protocol
- ▲ Power supply and reflector housing
- ▲ Longwave, shortwave, and visible UV bulbs available
- ▲ Graphic LCD display with keypad
- ▲ 2,000 hour manufacturer's bulb warranty
- ▲ Easy UV lamp access via overhead hatch door

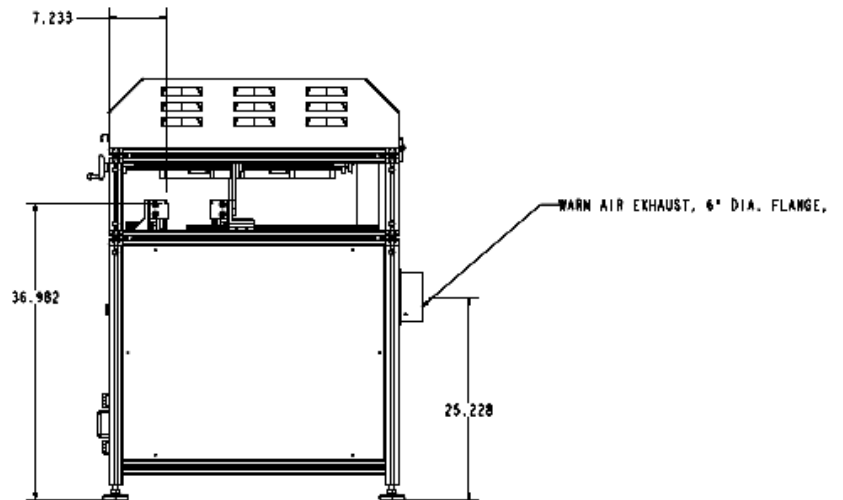
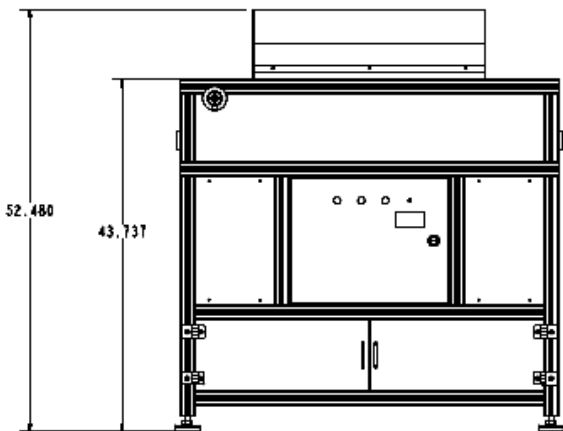
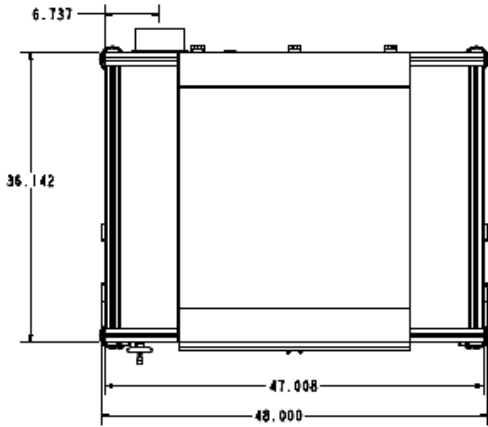
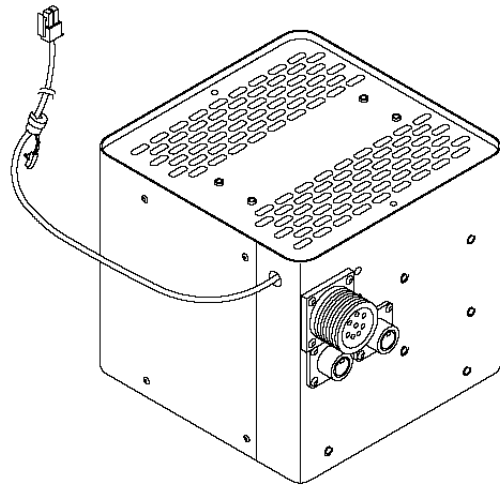
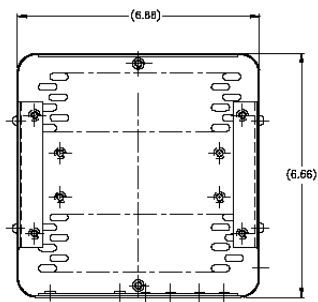
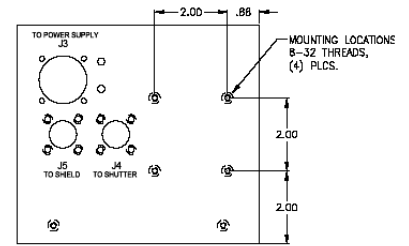
For more information on PVA's automated dispensing and curing capabilities, please contact a sales representative at (518) 371-2684.



15 Solar Drive
Halfmoon NY 12065
tel 518 371 2684
fx 518 371 2688
www.pva.net



WARNING!
 Ultra-High Light
 Danger of eye and skin burn. Do not look directly
 at the source. Wear proper eye protection and
 do not exceed the MPE for the eye. Do not
 exceed the MPE for the skin.



Drawing measurements shown in inches