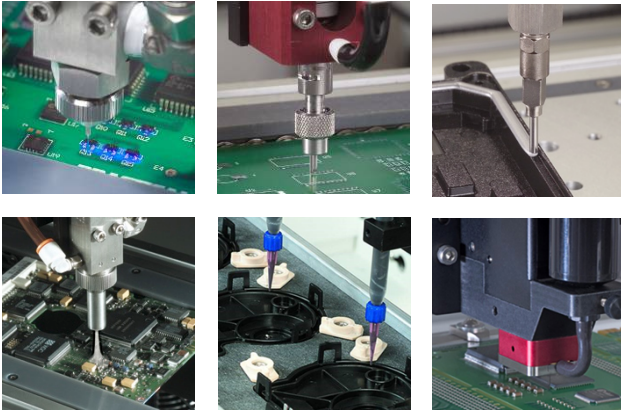




**WHERE  
PRECISION  
DRIVES  
PRODUCTION**



## PVA Product Overview

### About PVA

PVA is a global manufacturer of conformal coating systems, innovative fluid dispensing solutions and precision valve technology. Throughout the changing global manufacturing landscape, PVA remains committed to providing our customers with exceptional products and global support.

### Complimentary Array of Products

Coating & Dispensing • Valves • Curing Ovens • Consumables • Fume Filtration • Inspection

### Industries

Electronics • Automotive • Aerospace • General Packaging • Medical Device • Renewable Energy Consumer Goods • Military / Defense

### Product Guide

#### Selective Conformal Coating, General Dispensing, Microelectronics – (Underfill, Paste, Encapsulant)

Delta 3 Selective Coating / Dispensing System  
Delta 6 Selective Coating / Dispensing System  
Delta 8 Selective Coating / Dispensing System  
PVA350 Tabletop Selective Coating System

#### Conformal Coating Inspection

PVA 20/20 Inspection System



PVA 20/20

#### Meter-mix Dispensing

MX4000 Gear Pump Meter-Mix Systems  
MX1000 Rod Displacement Meter-Mix

#### Optical Bonding

PVA710 Optical Bonding System

#### Dispensing Consumables

Needles and Tips  
Static Mixers

### Valve Options

JDX Jet Dispense Valve  
FCM Series Micro Dispense  
FCS Series Atomized Spray  
FC Series Needle Dispense  
SVX Auger Valve  
MV Series Shot Metering  
CA Series Diaphragm Valves  
PC Series 2-part Mixing Valves  
VPX Series Volumetric Pump  
-CF Series Film Coating (Airless) Valves



FCM100

### Manual/Benchtop Dispensers

Valve/Syringe Controllers  
Valve/Syringe Stands  
Custom Solutions

### Inline Curing Ovens

IR2000 Infrared Heat Curing Chamber  
UV1000 Ultraviolet Light Curing System  
UV2000 Ultraviolet Light Curing Chamber



UV2000

### Custom Automation

Selective Soldering  
Odd-form Pick and Place  
Automated Screw Driving

### Material Delivery Tanks / Pumps

PVA-2LTUV Two Liter Bottle Pressure Reservoir  
PVA-5LTUV Five Liter Bottle Pressure Reservoir  
PVA10G Ten Gallon Stainless Steel Pressure Tank Assembly  
GPCC Fluid Delivery System  
PVA-1GPU One Gallon Hydraulic Metering Pump  
CP Series Pumps for Medium to High Viscosity Materials

### Fume Filtration

FX800 Fume Filtration System



FX800

One Mustang Drive  
Cohoes NY 12047  
tel 518 371 2684  
fx 518 371 2688  
www.pva.net

# Selective Coating Equipment Comparison



PVA350

Delta 3

Delta 6

Delta 8

Repeatability	.025mm	.025mm	.025mm	.025mm
Max Speed	500mm/sec	670mm/sec	670mm/sec	670mm/sec
Encoder Resolution	5 micron	5 micron	5 micron	5 micron
Gantry Drive System	Closed Loop DC servo, Ballscrew Drive	Closed Loop DC servo, Ballscrew Drive	Closed Loop DC servo, Ballscrew Drive	Closed Loop DC servo, Ballscrew Drive
Max Acceleration	0.25 g	0.5 g	0.5 g	0.5 g
<b>Travel</b>				
Initial XY Axis Travel	400mm x 400mm	521mm x 485mm	521mm x 485mm	621mm x 595mm
Z Axis Travel	90mm	100mm	100mm	100mm
<b>Board Handling</b>				
Conveyor Type	N/A	Chain	Flat Edge Belt or Chain	Flat Edge Belt or Chain
Min Conveyor Width	N/A	50mm	50mm	50mm
Above Board Clearance	70mm	80mm	80 mm	50mm (standard) 100+mm (optional)
Under Board Clearance	80mm	80mm (standard)	80mm (standard)	100mm (standard)
Transport Height	N/A	880mm to 920mm	940mm to 965mm	940mm to 965mm
Conveyor Protocol	N/A	SMEMA	SMEMA	SMEMA
Standard Board Sizes	Up to 380mm Depending on Options	50mm-457mm Depending on Options	50mm-457mm Depending on Options	50mm-457mm Depending on Options
<b>Facilities</b>				
Power	120 to 240 VAC, 50/60hz	120 to 240 VAC, 50/60hz	120 to 240 VAC, 50/60hz	120 to 240 VAC, 50/60hz
Air Supply	<10 CFM at > 80 PSI (5.5 bar) Filtered @ 5microns	<10 CFM at > 80 PSI (5.5 bar) Filtered @ 5microns	<10 CFM at > 80 PSI (5.5 bar) Filtered @ 5microns	<10 CFM at > 80 PSI (5.5 bar) Filtered @ 5microns
Footprint	945mm x 832mm x 794mm	813mm x 990mm x 1572mm	847mm x 1136.9mm x 1606mm	1219mm x 1257mm x 1687mm
Exhaust	300cfm minimum	300cfm minimum	300cfm minimum	300cfm minimum
<b>Features</b>				
Four-Axis	Option	Option	Option	Option
Bar Code Reading	Option	Not Available	Option	Option
Passive Programming Camera	Option	Not Available	Option	Option
XY Fiducial Camera	Option	Not Available	Option	Option
Part Shuttles	Option	Not Available	Option	Option
Exhaust Blower	Option	Option	Option	Option
PathMaster Software	Standard	Standard	Standard	Standard
Offline Programming	Standard	Standard	Standard	Standard
Onboard Computer	Option	Not Available	Standard	Standard
Flow Monitoring	Option	Option	Option	Option
Dual/Multi Head Tooling	Option	Not Available	Option	Option

## PVA Patents

PVA holds four US patents, including the only **TRUE** four-axis motion capability featuring patented tilt and servo rotation control (4 axis patent – #6447847), and the atomized spray valve technology (ES Valve patent – #6523757).

