



**WHERE
PRECISION
DRIVES
PRODUCTION**



VALVE SPECIFICATIONS

Dimensions

173mm x 19mm x 19mm
(6.82" x 0.75" x 0.75")

Weight

6 oz

Viscosity Range

1 cps - 1000 cps

Operating Air Pressure

60 - 100 psi

Maximum Inlet Fluid Pressure

3500 psi

Wetted Components

Stainless Steel, Teflon®, Kalrez®

Transfer Efficiency

99%

Coating Speed

Up to 457mm (18in)/sec

FC100-C4

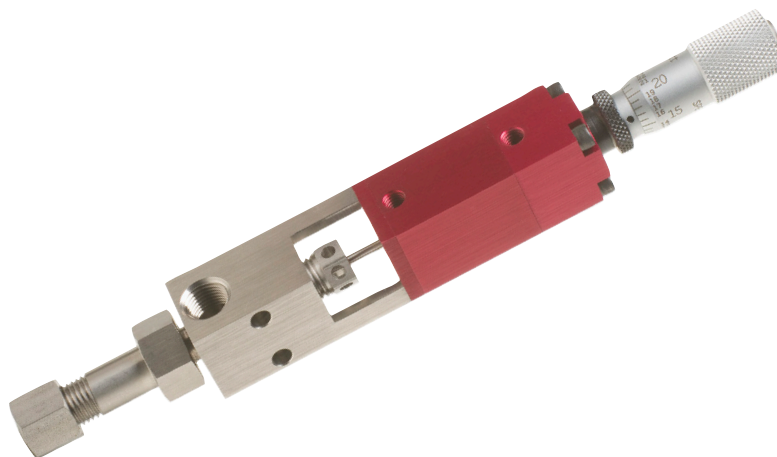
Non-atomized Flow Coating Valve

The FC100-C4 flow coating valve produces a sharp, non-atomized stream of low viscosity fluids and coatings. The precise application process is ideal for solvent-based chemistries requiring wet film builds of at least 0.010".

The FC100-C4 has many integrated features including:

- Non-atomized coating process with superior edge definition
- Rapid coating speed up to 457mm (18in)/second
- Divorced valve design prevents material contamination of the air section
- Stainless steel fluid body for superior material compatibility
- Multi-port application head with interchangeable 19g to 27g tips
- Adjustable flow control

For more information, please contact PVA at info@pva.net or (518) 371-2684.



FC100-C4 Mounting Dimensions

