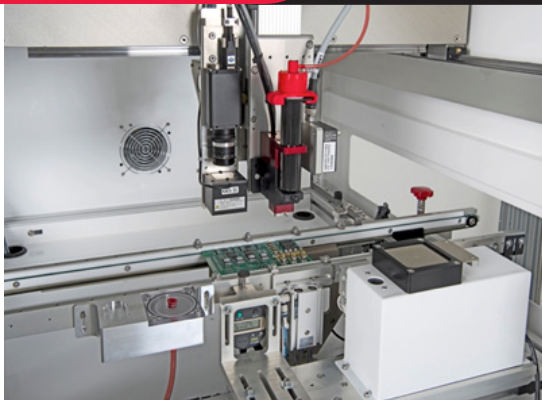




**WHERE
PRECISION
DRIVES
PRODUCTION**



SYSTEM SPECIFICATIONS

Gantry System Design

Closed loop brushless DC servo motors with optical encoders and ball screw slides on all axes

Work Area

1 Valve / Tool:
621 mm x 595 mm x 100 mm
(24.45" x 23.43" x 3.94")

XYZ Repeatability

±25 microns (±0.001")

Resolution

5 microns (0.0002")

Maximum Acceleration

0.5g

Footprint

1046 mm x 1270 mm x 2350.9 mm
(41.18" x 50.0" x 92.56")

Programming Software

PathMaster® software with offline image import and programming capability

Delta 8 Selective Coating/Dispensing System

The Delta 8 is a flexible robotic conformal coating/dispensing system that is ideal for selective coating, potting, bead, and meter-mix dispensing applications. Conceptualized for maximum flexibility, the system can also be configured for custom assembly applications.

Maintaining the preferred features of previous workcells, the Delta 8 features a robust overhead three-axis motion platform suitable for inline or batch operations. Improved structural and gantry rigidity have been added for robustness and easier access.

The Delta 8 has many options and integrated features including:

- Robotic system repeatability of 25 microns
- Patented servo-controlled optional four-axis motion featuring valve tilt and rotate
- Closed loop process control throughout gantry system
- Multiple dispensing applications or materials in one cell
- Onboard PC for unlimited program storage
- Exclusive PathMaster® programming environment

For more information, please contact PVA at info@pva.net or (518) 371-2684.



Delta 8

The Delta 8 is ideal for selective conformal coating and dispensing applications that require a high level of accuracy and repeatability in moderate to high volume manufacturing environments. It is a closed-loop robotic platform featuring optical encoder feedback on all axes.

Power 120V, 220V, 50-60 Hz
Air Supply 80 psi dry, unlubricated air

XYZ Specifications

Gantry System: Brushless DC servo motors
 Precision ball screw slides
XYZ Repeatability: ±25 microns (±0.001")
Maximum Speed (XYZ): 670 mm/sec (27.6"/sec)
Maximum Acceleration: 0.5g

Resolution: 5 microns (0.0002")

Payload Capacity: 11.36kg (25 lbs)

Standard Features

PathMaster® Windows- based software
 FastPath™ offline image programming capability
 Onboard PC with flat screen monitor
 Remote teach pendant with trackball
 USB communication port
 Closed-loop low level exhaust notification (spray systems)

Optional Features:

Servo 4th Axis motion featuring valve tilt & rotate
 Closed-loop material flow monitoring
 Inline material metering
 Bar code program selection
 Low level fluid sensor
 Valve and / or fluid heating
 Programming camera
 Active vision with XY correction
 Substrate heating – contact or non-contact
 Dispense zone weigh scale
 Multi-zone conveyor
 Conveyor auto width adjust

Board Handling

Conveyor Type: Flat belt or chain
Minimum Conveyor Width: 50 mm (1.97")
Maximum Conveyor Width: 500 mm (19.685")
Board Clearance Topside: 50 mm (1.97") Standard
 100 mm (3.94") Optional
Board Clearance Underside: 80 mm (3.15")
Edge Clearance: 4.7 mm (0.185")

Transport Height: 940 mm - 965 mm (37" - 38")
Communications Protocol: SMEMA
Conveyor Options: Lift and locate, through hole pin,
 under board support
Conveyor Speed: Up to 24.4m/min (80ft/min)
Process Flow: Programmable right to left or
 left to right, bidirectional

Weight Limit: 5 pounds (belt)
 15 pounds (chain)

Fluid Applications

Spray Valves: FCS300-ES, FCS300-R/F, FC100-CF
Dispense Valves: FC100-MC, FCM100, SB300
Jetting Valve: JDX
Auger Valves: SV200, SVX
Progressive Cavity Valves: ProFlow 1K, ProFlow 2K

Material Feed Options: Syringe (1-55cc)
 Cartridge feed (6-20 oz)
 Pressure vessel
 Drums, totes

Backside of Machine 80 - 100 PSI
Dry compressed air required

Power drop required - See machine spec for voltage

