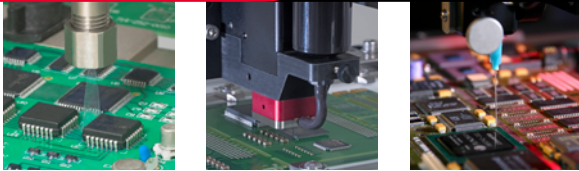




INNOVATION. **PRECISION.** EXCELLENCE.



About PVA

PVA is a global manufacturer of conformal coating systems, innovative fluid dispensing solutions and precision valve technology. Throughout the changing global manufacturing landscape, PVA remains committed to providing our customers with exceptional products and global support.

Complimentary Array of Products

Coating & Dispensing • Valves • Curing Ovens
Consumables • Inspection

Industries

Electronics • Automotive • Aerospace • General Packaging • Medical Device • Renewable Energy
Consumer Goods • Military/Defense

Patents

- Four US Patents including:
 - The only true four-axis motion capability featuring patented tilt & servo rotation control (*Four-Axis Patent #6447847*)
 - Atomized spray valve technology (*ES Valve Patent - #6523757*)

PVA Product Overview

Selective Conformal Coating, General Dispensing, Microelectronics (Underfill, Paste, Encapsulant)

Delta 6 Selective Coating/Dispensing System
Delta 8 Selective Coating/Dispensing System
PVA350 Tabletop Selective Coating System
Sigma Benchtop Robot

Valve Options

HMX Hot Melt Jet
JDX Jet Dispense Valve
FCM Series Micro Dispense
FCS Series Atomized Spray
FC Series Needle Dispense
SVX Auger Valve
MV Series Shot Metering
CA Series Diaphragm Valves
PC Series Two-Part Mixing Valves
CF Series Film Coating (Airless) Valves

Custom Automation

Selective Soldering
Odd-form Pick and Place
Automated Screw Driving
ABB Six-Axis Robots
Plasma Surface Treatment

Inline Curing Ovens

DeltaTherm Infrared Heat Curing Chamber
Spectra UV Oven

Material Delivery Tanks / Pumps

PVA-2LTUV Two Liter Bottle Pressure Reservoir
PVA-5LTUV Five Liter Bottle Pressure Reservoir
PVA10G Ten Gallon Stainless Steel Pressure Tank
GPCC Fluid Delivery System
PVA-1GPU One Gallon Hydraulic Metering Pump
CP Series Pumps for Medium to High Viscosity Materials

Meter Mix Dispensing

SPP Servo Piston Pump
SGP Servo Gear Pump
SCTP Servo Cartridge Pump
PDP Progressive Cavity Dual Pump

Manual/Benchtop Dispensers

Valve/Syringe Controllers
Valve/Syringe Stands
Custom Solutions

Dispensing Consumables

Needles and Tips
Static Mixers

REV - 2/2025

Headquarters
6 Corporate Drive | Halfmoon, NY 12065
tel +1 518 371 2684 | fx +1 518 371 2688
www.pva.net | info@pva.net



Repeatability	.05 mm	.025 mm	.025 mm	.025 mm
Max Speed	300 mm/sec	500 mm/sec	670 mm/sec	670 mm/sec
Encoder Resolution	N/A	5 micron	5 micron	5 micron
Gantry Drive System	Stepper Driven Belt Drive	Closed loop DC servo Ballscrew Drive	Closed loop DC servo Ballscrew Drive	Closed loop DC servo Ballscrew Drive
Max Acceleration	0.15 g	0.25 g	1 g	0.5 g
Travel				
Initial XY Axis Travel	330 mm x 240 mm	400 mm x 400 mm	521 mm x 485 mm	621 mm x 595 mm
Z Axis Travel	100 mm	90 mm	100 mm	100 mm
Board Handling				
Conveyor Type	N/A	N/A	Flat Edge Belt or Chain	Flat Edge Belt or Chain
Min Conveyor Width	N/A	N/A	50 mm	50 mm
Above Board Clearance	100 mm	70 mm	100 mm	50 mm (standard) 100+ mm (optional)
Under Board Clearance	60 mm	80 mm	100 mm	100 mm (standard)
Transport Height	N/A	N/A	940 mm to 965 mm	940 mm to 965 mm
Conveyor Protocol	N/A	N/A	SMEMA	SMEMA
Standard Board Sizes	300 mm x 230 mm	Up to 380 mm	50 mm - 457 mm	50 mm - 457 mm
Facilities				
Power	120 - 240 VAC, 50/60Hz	120 - 240 VAC, 50/60Hz	120 - 240 VAC, 50/60Hz	120 - 240 VAC, 50/60Hz
Air Supply	<10 CFM at > 80 psi (5.5 bar) Filtered at 5 microns	<10 CFM at > 80 psi (5.5 bar) Filtered at 5 microns	<10 CFM at > 80 psi (5.5 bar) Filtered at 5 microns	<10 CFM at > 80 psi (5.5 bar) Filtered at 5 microns
Footprint	743 mm x 643 mm x 805 mm	945 mm x 832 mm x 794 mm	854 mm x 1170 mm x 2105 mm	1270 mm x 973 mm x 2222.6 mm
Exhaust Requirement	250 CFM minimum	300 CFM minimum	300 CFM minimum	300 CFM minimum
Features				
Four-Axis	N/A	Option	Option	Option
Bar Code Reading	N/A	Option	Option	Option
XY Fiducial Camera	N/A	Option	Option	Option
Software	N/A	PathMaster	PathMaster or PathMaster X ¹	PathMaster or PathMaster X ¹
Offline Programming	Standard	Standard	Standard	Standard
Onboard Computer	N/A	Option	Standard	Standard
Flow Monitoring		Option	Option	Option

¹ Available on Direct Series models.