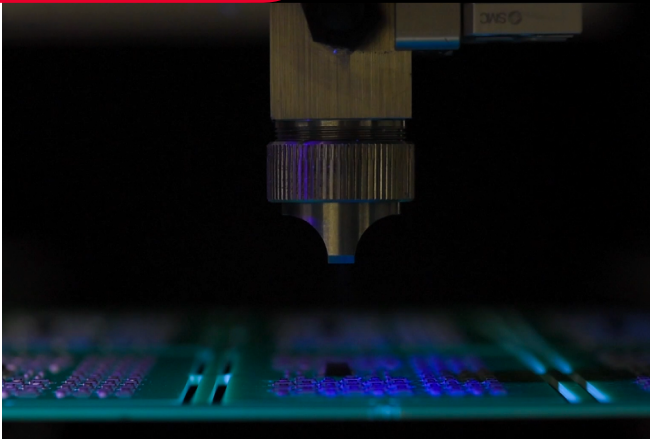




INNOVATION. **PRECISION.** EXCELLENCE.



## System Specifications

### Dispense Valve

FCS300-R

### Spray Pattern

0.25 in - 2 in diameter (typical)

### Pressure Reservoir

PVA-2LTUV

### Controller

ST100

### Fluid Viscosity Range

1 cps - 20,000 cps (self-leveling fluid)

### Wetted Components

Stainless Steel, Teflon, Kalrez

### Air

80 psi  
(5.5 bar)

### Power Requirements

115V/230V, 50-60 Hz

### Optional Equipment

FX800 fume extraction system



## FCS300-R-2LT-1-S Handheld Coating System

This complete manual spray system is typically used for applications requiring a fixed atomized nozzle above a bench where a part can be positioned underneath the air cap to apply a fluid. It utilizes the FCS300-R spray valve mounted on an adjustable arm stand with weighted base and activated via the foot pedal of the ST100 valve controller. The valve controller can be set in Manual mode to apply fluid for the duration the foot pedal is pressed or Timed mode for single pulse repeatable volumes.

Supplied with a 2-liter pressure tank, it can hold most industry standard 1 or 2-liter bottles, eliminating the need to pour fluid into a tank which can introduce moisture and air.

Complete systems are supplied with all necessary fluid and air fittings and tubing (6 ft) to operate out of the box.

The FCS300-R-2LT-1-S has many additional integrated features including:

- Low volume, low pressure atomized spray valve for manual conformal coating of PCBs
- 0 - 15 psi precision atomizing air regulator
- I/O cable for remote activation available

For more information, please contact PVA at [info@pva.net](mailto:info@pva.net) or contact your local representative.

REV - 3/2024

Headquarters  
6 Corporate Drive | Halfmoon, NY 12065  
tel +1 518 371 2684 | fx +1 518 371 2688  
[www.pva.net](http://www.pva.net) | [info@pva.net](mailto:info@pva.net)

# System Assembly

