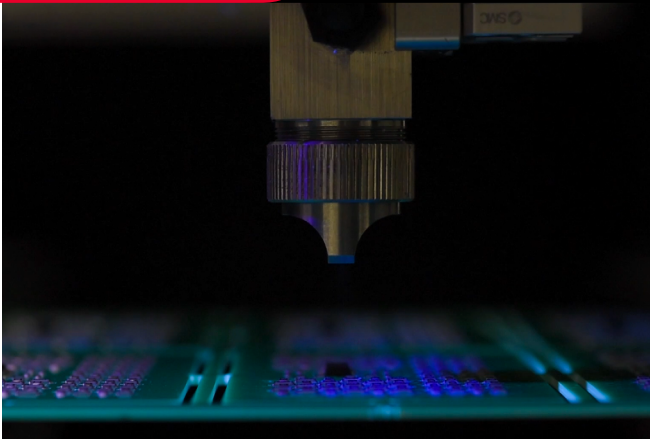




INNOVATION. **PRECISION.** EXCELLENCE.



System Specifications

Dispense Valve

FCS300-R

Spray Pattern Diameter

6.35 mm - 50.8 mm
(0.25 in - 2 in)

Fluid Reservoir

Direct syringe mount to valve

Controller

ST100

Fluid Viscosity Range

1 cps - 50,000 cps

Wetted Components

Stainless Steel, Teflon, Kalrez

Air

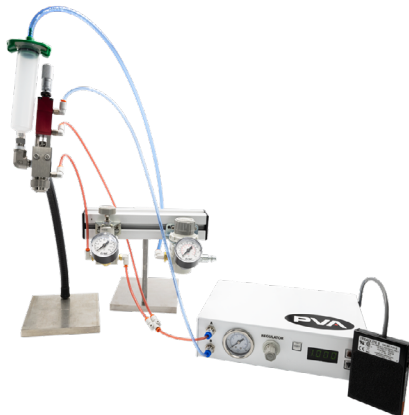
80 psi
(5.5 bar)

Power Requirements

115V/230V, 50-60 Hz

Optional Equipment

FX800 fume extraction system



FCS300-R-SYS-1-S Handheld Coating System

This complete manual spray system is used for applications requiring a fixed dispense nozzle above a bench where a part can be positioned underneath the dispense tip to apply a fluid. It utilizes the FCS300-R spray valve mounted on an adjustable arm stand and activated via foot pedal of the ST100 valve controller. The valve controller can be set in Manual mode to apply fluid for the duration the foot pedal is pressed or Timed mode for single pulse repeatable volumes.

Supplied with a 90° luer lock fitting, standard syringes of fluid can be threaded directly to the inlet of the valve.

Complete systems are supplied with all necessary fluid and air fittings and tubing (6 ft) to operate out of the box.

The FCS300-R-SYS-1-S has many additional integrated features including:

- Low volume, low pressure atomized spray valve for manual conformal coating of PCBs
- 0 - 15 psi precision atomizing air regulator
- I/O cable for remote activation available

For more information, please contact PVA at info@pva.net or contact your local representative.

REV - 3/2024

Headquarters
6 Corporate Drive | Halfmoon, NY 12065
tel +1 518 371 2684 | fx +1 518 371 2688
www.pva.net | info@pva.net

System Assembly

