



INNOVATION. **PRECISION.** EXCELLENCE.



Valve Specifications

Dimensions

195 mm x 19 mm x 19 mm
(7.70 in x 0.75 in x 0.75 in)

Weight

8 oz

Viscosity Range

1 cps – Paste

Operating Air Pressure

60 – 100 psi

Maximum Inlet Fluid Pressure

100 psi

Dispense Volume Range

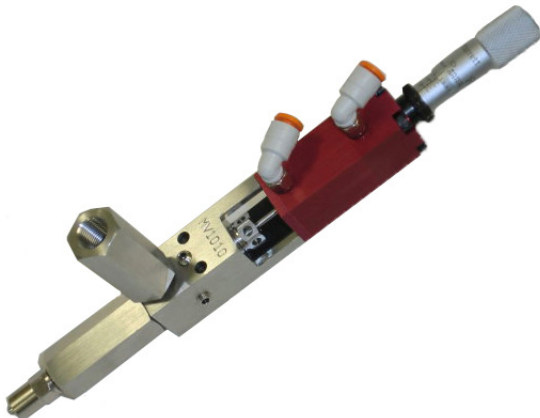
0.0001 cc to 0.0120 cc

Repeatability

1% - 2% (typical)

Wetted Components

Stainless Steel, Kalrez®, Teflon®



MV250-LL

Positive Displacement Dispensing Valve with Luer Lock Style Outlet

The MV250-LL Positive Displacement Valve is a true positive displacement metering valve capable of dispensing small volumes of material for applications requiring a high degree of accuracy and repeatability. Dispense volumes are determined by the valve's micrometer adjustment setting which regulates the travel of the displacement rod.

The benefit of using positive displacement technology is the dispense volumes cannot be altered by variations in viscosity or material pressure thus eliminating variables that can alter a process. And, with a lightweight, slim design, the MV250-LL can be integrated into manual dispense systems or fully automated platforms.

Besides the luer lock outlet adapter that allows for the use of industry standard disposable dispense tips, the MV250-LL has many other integrated features including:

- 0.0001 cc to 0.0120 cc shot volume per cycle
- True positive (rod) displacement metering action
- Adjustable micrometer permits shot size modification
- Divorced design prevents material contamination to the air section
- Precision inlet and outlet check valves provide precise metering
- Longer seal life with new O-ring & packing design
- Stainless steel fluid section for optimum material compatibility
- Bleed ports on fluid section for purging

For more information, please contact PVA at info@pva.net or contact your local representative.

Teflon® and Kalrez® are registered trademarks of Dupont

Headquarters
6 Corporate Drive | Halfmoon, NY 12065
tel +1 518 371 2684 | fx +1 518 371 2688
www.pva.net | info@pva.net

MV250-LL Mounting Dimensions

