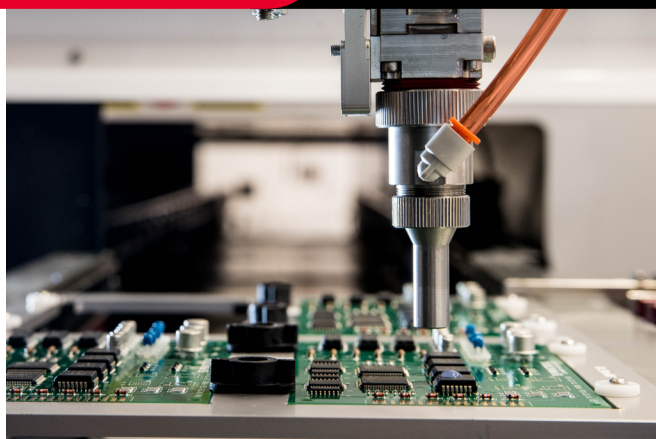




INNOVATION. **PRECISION.** EXCELLENCE.



Valve Specifications

Dimensions

159.19 mm x 30 mm x 30 mm
(6.27 in x 1.18 in x 1.18 in)

Weight

550 g

Viscosity Range

1 - 1,000 cps (unfilled)

Operating Air Pressure

60 - 100psi

Maximum Inlet Fluid Pressure

1500 psi

Wetted Components

Stainless Steel, FFKM

Transfer Efficiency

99%

Spray Pattern Width

3.175 mm - 25.4 mm
(0.125 in - 1 in)

PCS150

Compact Two Part Spray Valve

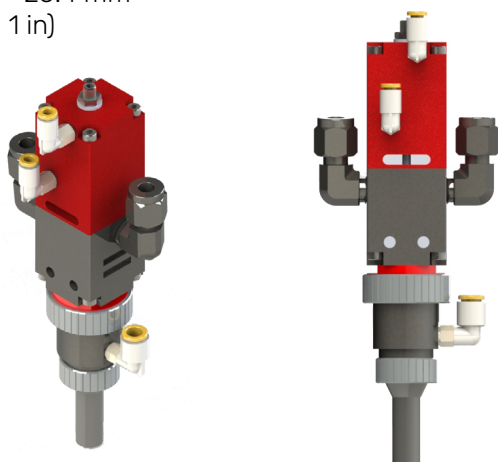
The PCS150 Compact Two Part Spray Valve is designed to apply reactive coatings. Its compact design and small wetted fluid path allows for processing of short pot life chemistries. It is ideal for plural component spray applications and can be integrated with PVA automated equipment or used with handheld dispensing operation.

The atomized spray process resulting from the PCS150 will produce excellent edge definition and coating transfer efficiencies in excess of 99%.

The PCS150 has many integrated features including:

- Low pressure, low volume atomized process
- Stainless steel fluid body for superior material compatibility
- Divorced valve design prevents material contamination of the air section
- Separate material paths prevent mixing prior to material entering the static mixer
- Adjustable suck back for cleaner valve shutoff

For more information, please contact PVA at info@pva.net or contact your local representative.



Headquarters
6 Corporate Drive | Halfmoon, NY 12065
tel +1 518 371 2684 | fx +1 518 371 2688
www.pva.net | info@pva.net

PCS150 Mounting Dimensions

