



INNOVATION. **PRECISION.** EXCELLENCE.



Valve Specifications

Dimensions

38mm x 38mm x 152mm
(1.5" x 1.5" x ~6.7")

Weight

510 g (18 oz)

Operating Air Pressure

60 - 100 psi (4.1 - 6.9 bar)

Maximum Fluid Pressure

1500 psi (103 bar)

Wetted Components

Carbide, Stainless Steel, Viton®, Urethane

Viscosity Range

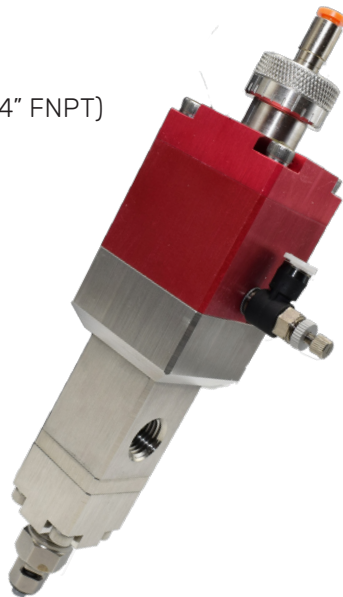
25,000 cps - Paste

Fluid Inlet

1/4" NPT Female

Fluid Outlet

Male Luer-Lock™ Adapter
(Adapter Removable for 1/4" FNPT)



SB400-C

High Flow Carbide Dispense Valve

The SB400-C is a high pressure, high flow, rear-closing dispense valve with adjustable suck back designed for applying single-component medium-to-high viscosity fluids. Typical applications include dot dispensing, gasketing, bead placement, and potting.

A specially designed carbide rod with lip seal combination resists wear against abrasive fillers making it ideal for dispensing fluids such as gap fillers and thermally conductive materials.

Features and Applications

- High flow carbide dispense valve
- Adjustable suck back for compressible fluids
- Interchangeable outlet – Luer or FNPT
- Dispense thermal interface materials
- Dispense gap fillers
- High viscosity grease dispense valve

Related Equipment

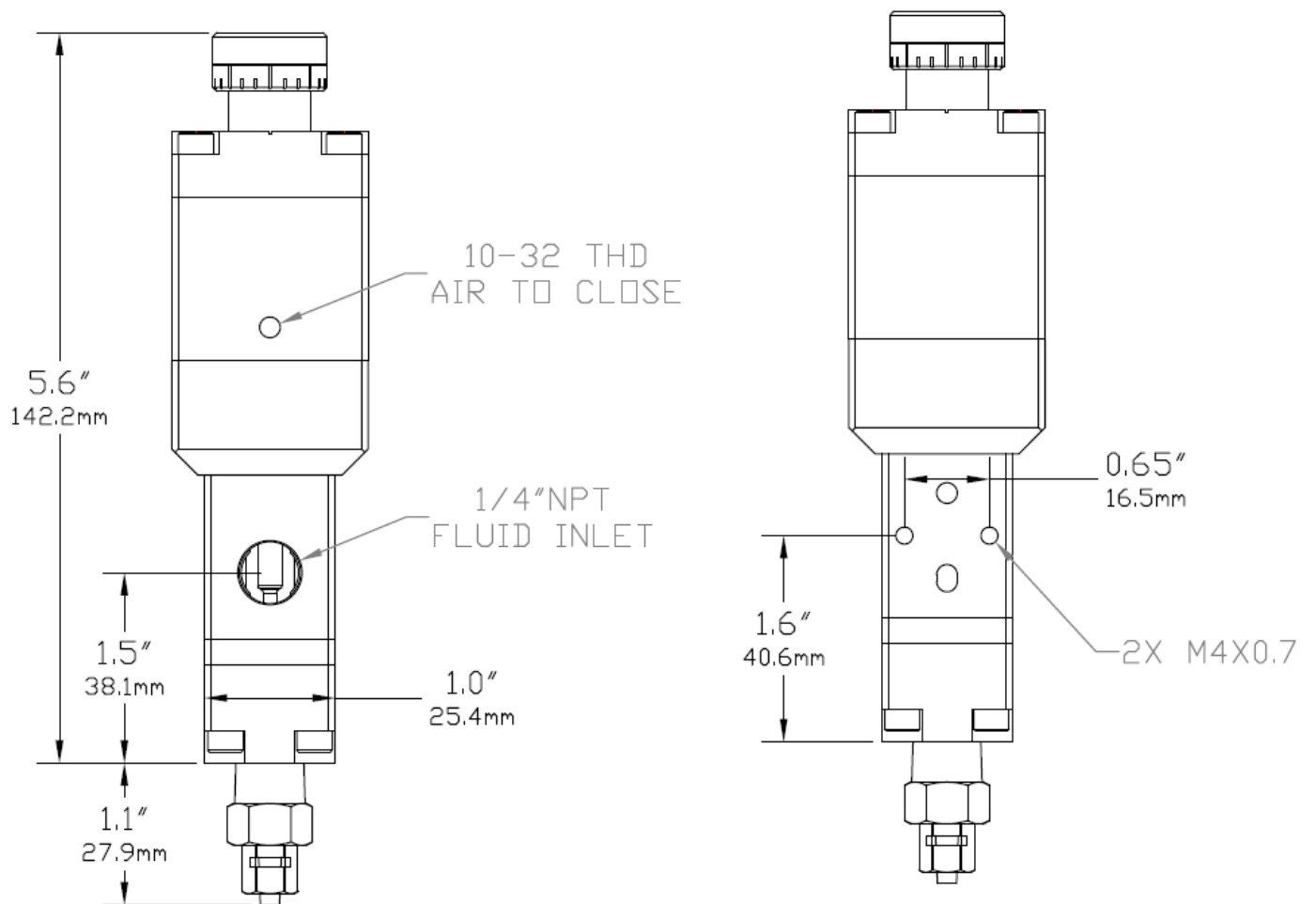
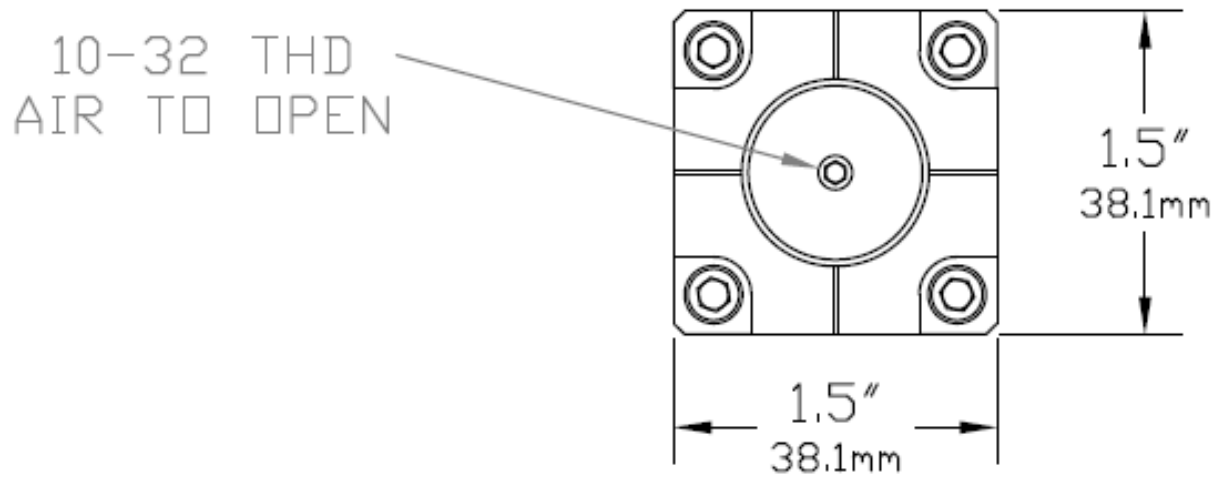
- PVA-1GPU, 1-Gallon hydraulic pump
- PVA-5GPU, 5-Gallon hydraulic pump
- RMP-SB400-C, Gear style metering pump

For more information, please contact PVA at info@pva.net or contact your local representative.

Luer-Lok™ is a Becton Dickinson and Co. trademark.

Headquarters
6 Corporate Drive | Halfmoon, NY 12065
tel +1 518 371 2684 | fx +1 518 371 2688
www.pva.net | info@pva.net

SB400-C High Flow Dispense Valve



All dimensions provided in inches and millimeters.